

City of San Mateo



# San Mateo CERT

Emergency Communications

# Encourages Members To...

- Buy a pair of Midland GXT1000/1050 family radios
- Get a GMRS license
- Participate in CERT training and events to practice their communications skills

# For Those Who Are Willing

- Get a ham radio license (we hand out the BAEARS flyer at “Class 6”)
- Buy a ham radio and other useful ham-related equipment
- Become a member of SCARES and participate in their training and events
- Participate in CERT training and events

# The Numbers

- 530 people have completed San Mateo CERT training
- 72 have a ham license
- 15 are members of SCARES

# Communications-Related Classes

- Family Radio for beginners (how to turn on the radio, set a channel, talk)
- Neighborhood communications (how to participate in a net using family radios)
- **Planned:** City-wide communications (ham and family radio)

# CERT Events

- 2010/2009/2008 (March) – Silver Dragon
  - 10 teams, each with a ham operator
  - Net control in a trailer, with a scribe
  - Communicators were able to switch to secondary frequency when a conflict occurred with FC
- 2009 (October) – as part of a bigger drill, each ERD checked in with a net run out of the San Mateo Police Station EOC

# Equipment Owned/Managed by CERT

- 80 truly awful family radios, 20 on each of 4 trailers. Have a grant request in to San Mateo Rotary Club to replace with Midland GTX1000 radios. Expect to get answer by end of 2010.
- 4 Icom 2100 single band (2m) radios, 1 on each of 4 trailers. Hope to update to dual-band radios.
- 2 Icom 2800 dual band (2m/70cm) radios at EOC (San Mateo Police Station), programmed with the frequencies we believe are necessary for San Mateo, including county, other county cities, hospital, etc.

# Communications Plan (ICS 205)

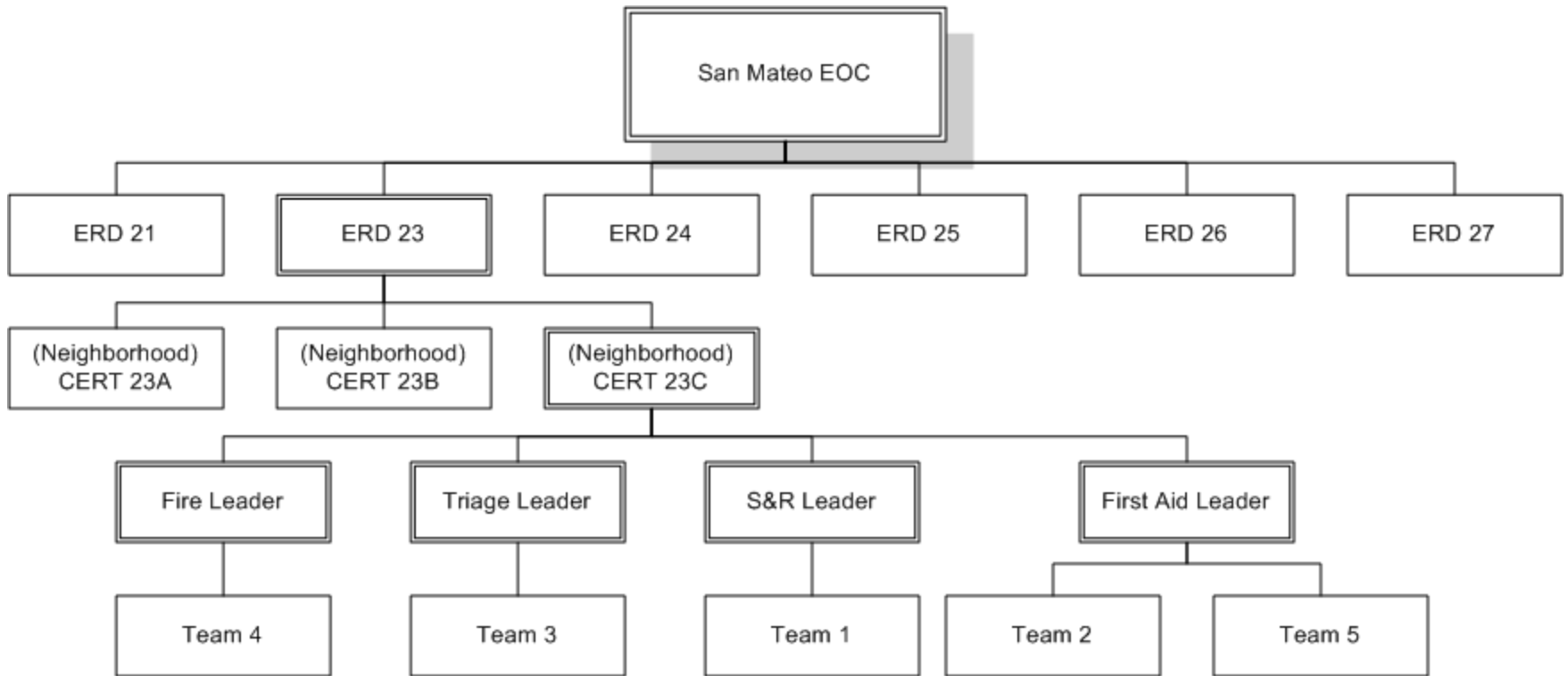
- **EOC Radio 1:**
  - San Mateo City OES Simplex
  - San Mateo CERT Simplex
- **EOC Radio 2:**
  - KC6ULT, San Mateo County, 2m repeater Net
  - K6MPN, SCARES 70cm repeater Net
- **Trailer Radios:** San Mateo CERT Simplex
- **Intra San Mateo GMRS/FRS Calling, EOC** – Primary and Secondary
- **FRS Communications** – channels assigned by neighborhood, based on not having same channel for adjacent neighborhoods

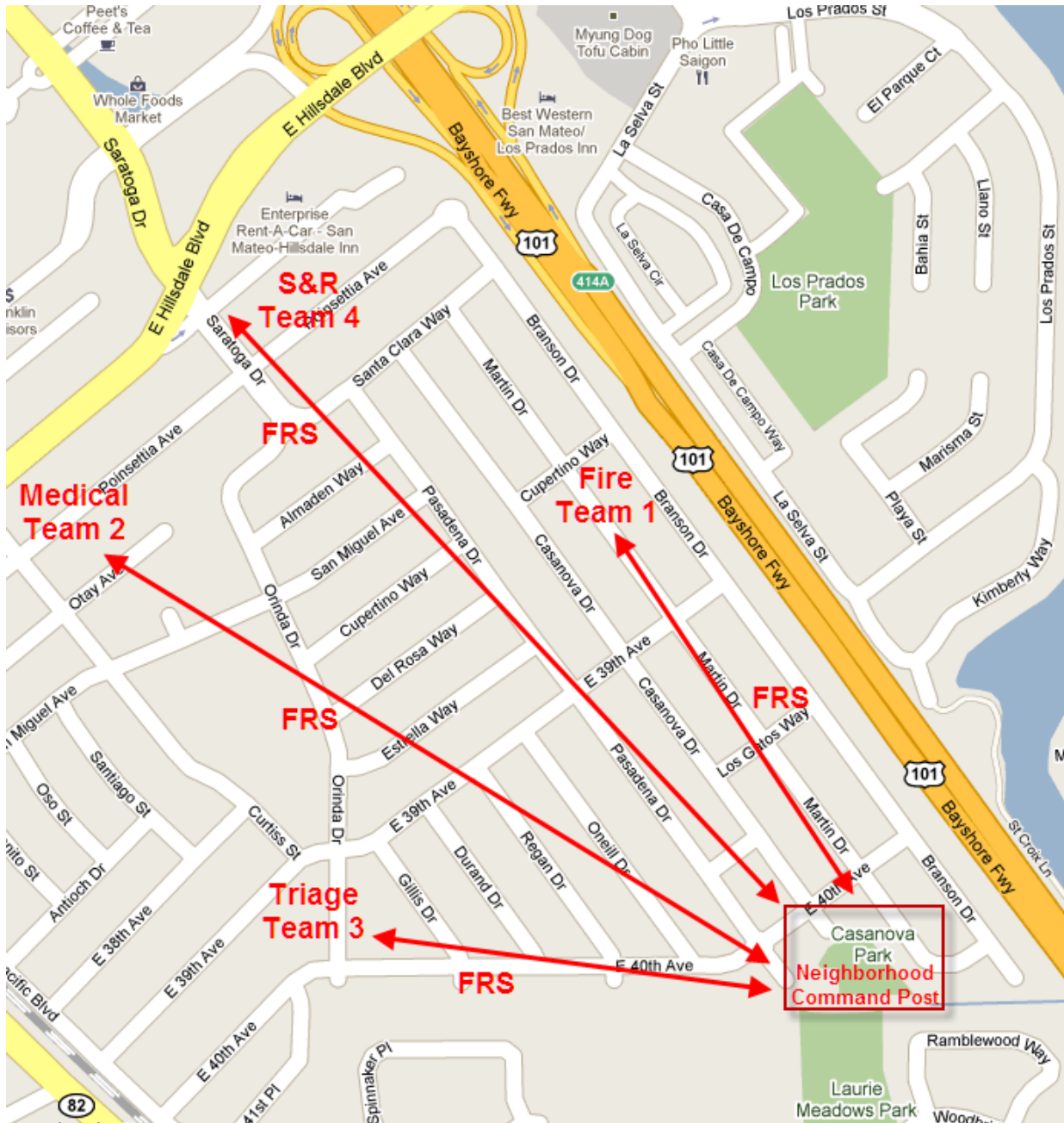


INCIDENT RADIO COMMUNICATIONS PLAN		1. Incident Name		2. Date/ Time Prepared		3. Operational Period Date/Time	
		City of San Mateo		12-Nov-10			
4. Basic Radio Channel Utilization							
Radio Type	Channel	Function	Frequency	Tone	Mode	Assignment	Remarks
SM EOC ICOM-2800H #1	Left M10	San Mateo City OES Simplex	145.650	114.8	FM	City of San Mateo EOC ham resource net	SM EOC hams <-> SM County hams
SM EOC ICOM-2800H #1	Right M5	San Mateo CERT Simplex	146.550	114.8	FM	Intra-San Mateo CERT Tactical Ham Net	SM ERD hams <-> SM EOC hams
SM EOC ICOM-2800H #2	Left M13	KC6ULT, San Mateo County, 2m repeater Net	146.865 -Dup	114.8	FM	San Mateo County EOC to City EOC Net	KC6ULT repeater, if repeater down, simplex on output frequency
SM EOC ICOM-2800H #2	Right M11	K6MPN, South County ARES, 70cm repeater Net	444.500 +Dup	100.0	FM	South County ham resource net	K6MPN repeater, if repeater down, simplex on output frequency
SM Trailers ICOM-2100	M5	San Mateo CERT Simplex	146.550	114.8	FM	Intra-San Mateo CERT Tactical Ham Net	Backup is on 70cm, which trailer radios cannot do
GMRS/FRS	4	Intra San Mateo GMRS/FRS Calling, EOC - Primary	462.6375		FM	CERT Calling - Primary	Call to find out if activated and what channel to use (primary)
GMRS/FRS	5	Intra San Mateo GMRS/FRS Calling, EOC - Secondary	462.6625		FM	CERT Calling - Alternate 1	Call to find out if activated and what channel to use (alternate)
FRS	8	FRS Communications	467.5625	1 (67.0 Hz)	FM	CERT neighborhood communications	(4) Baywood
FRS	8	FRS Communications	467.5625	2 (71.9 Hz)	FM	CERT neighborhood communications	(5) Baywood Park
FRS	8	FRS Communications	467.5625	3 (74.4 Hz)	FM	CERT neighborhood communications	(10) Hacienda
FRS	8	FRS Communications	467.5625	4 (77.0 Hz)	FM	CERT neighborhood communications	(11) Harbortown
FRS	8	FRS Communications	467.5625	5 (79.7 Hz)	FM	CERT neighborhood communications	(15) Laurelwood
FRS	8	FRS Communications	467.5625	6 (82.5 Hz)	FM	CERT neighborhood communications	(17) North Central
FRS	8	FRS Communications	467.5625	7 (85.4 Hz)	FM	CERT neighborhood communications	(21) San Mateo Glendale Village
FRS	8	FRS Communications	467.5625	8 (88.5 Hz)	FM	CERT neighborhood communications	(24) Shoreview Parkside
FRS	9	FRS Communications	467.5875	1 (67.0 Hz)	FM	CERT neighborhood communications	(1) 19th Avenue Park
FRS	9	FRS Communications	467.5875	2 (71.9 Hz)	FM	CERT neighborhood communications	(3) Aragon
FRS	9	FRS Communications	467.5875	3 (74.4 Hz)	FM	CERT neighborhood communications	(7) Central
FRS	9	FRS Communications	467.5875	4 (77.0 Hz)	FM	CERT neighborhood communications	(29) Laurie Meadows
FRS	9	FRS Communications	467.5875	5 (79.7 Hz)	FM	CERT neighborhood communications	(23) San Mateo Park
FRS	9	FRS Communications	467.5875	6 (82.5 Hz)	FM	CERT neighborhood communications	(30) Hillsdale Park
FRS	9	FRS Communications	467.5875	7 (85.4 Hz)	FM	CERT neighborhood communications	(33) Marina East
FRS	9	FRS Communications	467.5875	8 (88.5 Hz)	FM	CERT neighborhood communications	(34) Lakeshore
FRS	9	FRS Communications	467.5875	9 (91.5 Hz)	FM	CERT neighborhood communications	(36) Glendora
FRS	10	FRS Communications	467.6125	1 (67.0 Hz)	FM	CERT neighborhood communications	(8) Beresford/Hillsdale
FRS	10	FRS Communications	467.6125	2 (71.9 Hz)	FM	CERT neighborhood communications	(8) Clearview
FRS	10	FRS Communications	467.6125	3 (74.4 Hz)	FM	CERT neighborhood communications	(9) Fiesta Gardens
FRS	10	FRS Communications	467.6125	4 (77.0 Hz)	FM	CERT neighborhood communications	(18) North Shoreview
FRS	10	FRS Communications	467.6125	5 (79.7 Hz)	FM	CERT neighborhood communications	(19) Parrot Park
FRS	10	FRS Communications	467.6125	6 (82.5 Hz)	FM	CERT neighborhood communications	(22) San Mateo Highlands
FRS	10	FRS Communications	467.6125	7 (85.4 Hz)	FM	CERT neighborhood communications	(25) Sunnybrae
FRS	10	FRS Communications	467.6125	8 (88.5 Hz)	FM	CERT neighborhood communications	(28) South San Mateo
FRS	10	FRS Communications	467.6125	9 (91.5 Hz)	FM	CERT neighborhood communications	(31) Railroad North
FRS	10	FRS Communications	467.6125	10 (94.8 Hz)	FM	CERT neighborhood communications	(32) Marina West
FRS	10	FRS Communications	467.6125	11 (97.4 Hz)	FM	CERT neighborhood communications	(35) Los Prados

Prepared by Diana Rehfield  
ICS205

# CERT Net Organization





# Activation Plan

- We should and do not yet have a working activation plan.
- The current plan is for each ERD to meet at an assigned location, but these locations are not known to everyone in CERT and need to be published.
- Additional locations need to be added as not all locations will be accessible to all members of a given ERD.

# Changes...?

- City budget problems are changing CERT
- San Mateo and Foster City now share a Fire Chief – what does that mean for CERT?
- More important than ever to do drills and training without CERT Coordinator guidance